

GrowDex[®] Hydrogels and PhenoVue[™] dyes to your cellular imaging applications

Test reagents with -50% discount*

Test GrowDex Hydrogels for Your 3D cell work!

Reproducible

- Manufactured to the highest standards with strict quality control criteria to ensure lot to lot reproducibility.

Animal-free

- No animal biomolecules interfering with readouts.

Convenient

- Used and stored at room temperature, suitable for liquid handling systems and supplied in prepacked syringes
- Simple protocol – mix GrowDex hydrogels with media and cells.

Tunable

- Optimal gel stiffness is achieved by dilution with cell culture media. Matrix composition can be optimized easily
- by supplementing cell culture media with specific biomolecules such as growth factors.

Optimized for Imaging

- Transparent, no auto-fluorescence

Test PhenoVue dyes for Your cellular imaging research!

Organelle and cell compartment probes

- Bright dyes for high-quality images

Fluorescent secondary antibodies

- Cross-adsorbed, and highly cross-adsorbed for multiplex immunofluorescence experiments

Cell painting kits

- Set of six fluorescent probes and an optimized protocol to streamline your workflow

* Terms and conditions: Campaign is valid in Finland and until 31 March 2022 for PhenoVue reagents and GrowDex hydrogels. One time test discount can be only applied to the smallest package size of each product. This campaign cannot be combined with any other discounts or price agreements. All discounts are based on current list prices. Delivery charges and VAT are charged normally. Please refer to campaign code: GROW2022 when placing your order. Not applicable for web orders. For qualifying campaign products and prices, please contact PerkinElmer jaana.hyvarinen@perkinelmer.com or riina.huovinen@perkinelmer.com or your local City-Lab shop.

Which GrowDex[®] hydrogel to choose?

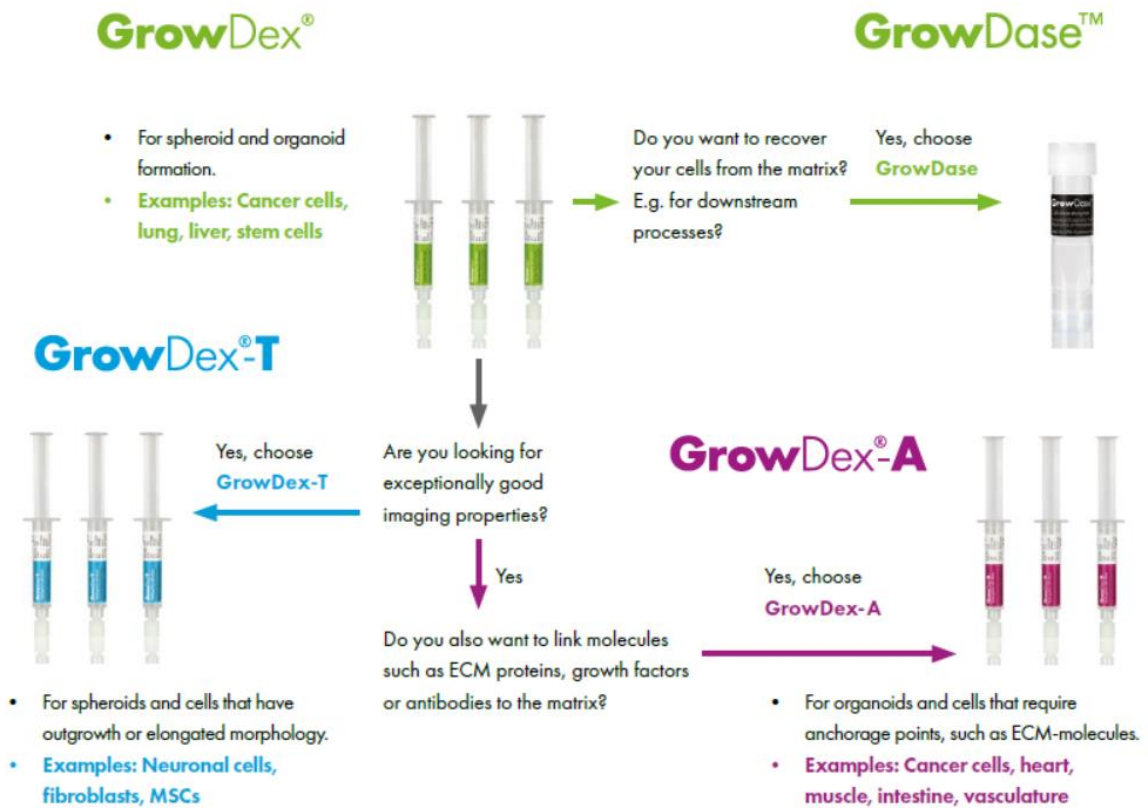


Table 2: Key differences between GrowDex and animal-derived matrices

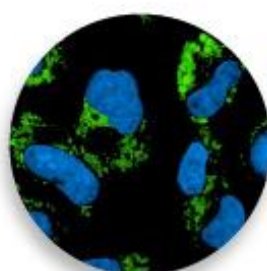
	GrowDex	Animal-derived matrix
Handling temperature	Room temperature	<4 °C
Polarization temperature	Not required	22 – 37 °C
Compatible dilution solution	Any media	Dilute with PBS or media
Stiffness tunability	GrowDex stiffness is within the low kPa range (ca. 0-2000 Pa). This can be fine-tuned by diluting with culture media.	Unknown
Storage	Unopened: room temperature opened: 4 – 8 °C	- 20 °C
Autofluorescence	Non-auto fluorescent	Proteins cause background fluorescence
Compatible pipette tips	Low-retention and low-adhesion pipette tips	Pre-cooled (< 4 °C) pipette tips
Cell recovery reagent	GrowDase (cellulase enzyme)	Proteolytic enzymes, dispase or Corning Cell Recovery Solution
Purity	RNA/DNA free	Traces of animal RNA/DNA

Product List

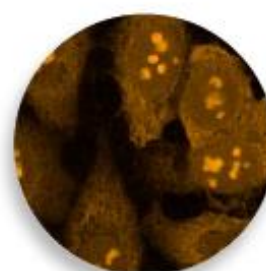
Description	Part Number	Pack Size
GrowDex The original hydrogel, highly biocompatible GrowDex has been used widely for culture of primary cells through to iPS and ES cells.	100103002	2.5 mL
	100103005	5 mL
	100103010	10 mL
GrowDex-T GrowDex-T brings superior imaging quality for phase contrast and brightfield imaging. It is completely transparent – ideal for imaging and automated analysis.	200103002	2.5 mL
	200103005	5 mL
	200103010	10 mL
GrowDex-A GrowDex -A is ideal if you need to customize your hydrogel. It has been modified by the addition of an avidin group so you can attach any biotinylated molecule.	300103002	2.5 mL
	300103005	5 mL
	300103010	10 mL
GrowDase GrowDase enzyme breaks down GrowDex hydrogels to form a solution in an easy, one-step, efficient cell recovery process.	900102001	1.25 mL
	900102002	2.5 mL



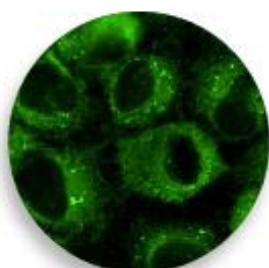
Fluor 568 - Phalloidin



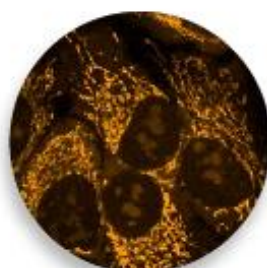
493 Lipid Stain



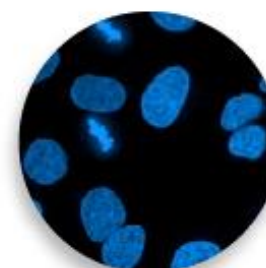
512 Nucleic Acid Stain



Fluor 488 - Concanavalin A



551 Mitochondrial Stain



Hoechst 33342 Nuclear Stain

PhenoVue dyes – product list

CP14881	PhenoVue Fluor 488 - WGA
CP15941	PhenoVue Fluor 594 - WGA
CP24881	PhenoVue Fluor 488 - Phalloidin
CP25681	PhenoVue Fluor 568 - Phalloidin
CP25941	PhenoVue Fluor 594 - Phalloidin
CP3R1	PhenoVue 578 Mitochondrial stain
CP3O1	PhenoVue 551 Mitochondrial stain
CP3D1	PhenoVue 641 Mitochondrial stain
CP41	PhenoVue Nile-Red Lipid stain
CP51	PhenoVue 493 Lipid stain
CP61	PhenoVue 512 Nucleic acid stain
CP71	PhenoVue Hoechst 33342 nuclear stain 10mg
CP72	PhenoVue Hoechst 33342 nuclear stain 100mg
CP94881	PhenoVue Fluor 488 Concanavalin A

2GXR488C1	PhenoVue Fluor 488 goat anti-Rabbit ab Cross-adsorbed
2GXR568C1	PhenoVue Fluor 568 goat anti-Rabbit ab Cross-adsorbed
2GXR594C1	PhenoVue Fluor 594 goat anti-Rabbit ab Cross-adsorbed
2GXR488H1	PhenoVue Fluor 488 goat anti-Rabbit ab Highly Cross-adsorbed
2GXR568H1	PhenoVue Fluor 568 goat anti-Rabbit ab Highly Cross-adsorbed
2GXR594H1	PhenoVue Fluor 594 goat anti-Rabbit ab Highly Cross-adsorbed
2GXM488C1	PhenoVue Fluor 488 goat anti-Mouse ab Cross-adsorbed
2GXM568C1	PhenoVue Fluor 568 goat anti-Mouse ab Cross-adsorbed
2GXM594C1	PhenoVue Fluor 594 goat anti-Mouse ab Cross-adsorbed
2GXM488H1	PhenoVue Fluor 488 goat anti-Mouse ab Highly Cross-adsorbed
2GXM568H1	PhenoVue Fluor 568 goat anti-Mouse ab Highly Cross-adsorbed
2GXM594H1	PhenoVue Fluor 594 goat anti-Mouse ab Highly Cross-adsorbed
2DXR568C1	PhenoVue Fluor 568 donkey anti-Rabbit antibody Cross-adsorbed
2DXR594C1	PhenoVue Fluor 594 donkey anti-Rabbit antibody Cross-adsorbed
2DXR568H1	PhenoVue Fluor 568 donkey anti-Rabbit antibody Highly Cross-adsorbed
2DXR594H1	PhenoVue Fluor 594 donkey anti-Rabbit antibody Highly Cross-adsorbed
2DXM568C1	PhenoVue Fluor 568 donkey anti-Mouse antibody Cross-adsorbed
2DXM594C1	PhenoVue Fluor 594 donkey anti-Mouse antibody Cross-adsorbed
2DXM568H1	PhenoVue Fluor 568 donkey anti-Mouse antibody Highly Cross-adsorbed
2DXM594H1	PhenoVue Fluor 594 donkey anti-Mouse antibody Highly Cross-adsorbed
PING11	PhenoVue cell painting kit 1 x 384
PING12	PhenoVue cell painting kit 10 x 384
PING13	PhenoVue cell painting kit 100 x 384
PVDDA1	PhenoVue dye diluent A (5X)
PING21	PhenoVue cell painting kit 1 x 384 JUMP
PING22	PhenoVue cell painting kit 10 x 384 JUMP
PING23	PhenoVue cell painting kit 100 x 384 JUMP

PERKINELMER HIGH QUALITY MICROPLATES TO YOUR IMAGING APPLICATIONS:

<https://www.perkinelmer.com/fi/category/microplates-imaging>

** *sample packages available for testing***



Part Number	Description
96-well PhenoPlates	
6055300	Black, optically clear flat-bottom, tissue-culture treated, lids, case of 50
6055302	Black, optically clear flat-bottom, tissue-culture treated, lids, case of 40
6055308	Black, optically clear flat-bottom, tissue-culture treated, lids, case of 160
6055500	Black, optically clear flat-bottom, poly-D-lysine-coated, lids, case of 40
6055508	Black, optically clear flat-bottom, poly-D-lysine-coated, lids, case of 160
6055700	Black, optically clear flat-bottom, collagen-coated, lids, case of 40
6055708	Black, optically clear flat-bottom, collagen-coated, lids, case of 160
6055800	Black, optically clear flat-bottom, ultra-low-attachment-coated, lids, case of 10
6055802	Black, optically clear flat-bottom, ultra-low-attachment-coated, lids, case of 40
384-well PhenoPlates	
6057300	Black, optically clear flat-bottom, tissue-culture treated, lids, case of 50
6057302	Black, optically clear flat-bottom, tissue-culture treated, lids, case of 40
6057308	Black, optically clear flat-bottom, tissue-culture treated, lids, case of 160
6057328	Black, optically clear flat-bottom, tissue-culture treated, non-irradiated, lids, case of 160
6057500	Black, optically clear flat-bottom, poly-D-lysine-coated, lids, case of 40
6057508	Black, optically clear flat-bottom, poly-D-lysine-coated, lids, case of 160
6057700	Black, optically clear flat-bottom, collagen-coated, lids, case of 40
6057708	Black, optically clear flat-bottom, collagen-coated, lids, case of 160
6057800	Black, optically clear flat-bottom, ultra-low-attachment-coated, lids, case of 10
6057802	Black, optically clear flat-bottom, ultra-low-attachment-coated, lids, case of 40
PhenoPlate Lids	
6000031	Lid, clear, for PhenoPlates, sterile, case of 200

ViewPlate											
Application	Color (frame/bottom)	Feature	Well Number	Case of 8	Case of 10	Case of 40	Case of 50	Case of 60	Case of 160		
Fluorescence Luminescence Absorbance	White/clear	Standard untreated	384-well				6007490				
			1536-well				6004490				
		Tissue-culture treated	96-well				6005181				
			384-well				6007480				
			1536-well				6004480				
		Tissue-culture treated, 1/2Area	96-well			6005760		6004470	6005768		
		Black/clear	Standard untreated	384-well					6007470		
				1536-well							
	Tissue-culture treated		96-well					6005182			
			384-well			6007460		6005225 ¹			
			1536-well			6004460					
	Tissue-culture treated, glass bottom		96-well			6005430					
	PDL coated		96-well				6005710				
			384-well					6007710		6007718	
			1536-well			6004710					
	PDL coated, glass bottom		96-well	6005530							
	Collagen coated		96-well				6005810			6005818	
			384-well				6007810			6007818	
			1536-well			6004810					
	Collagen coated, glass bottom		96-well	6005720							

1. Two sleeves of 25