

**From Start to Finish Line**

**All YOU Need for a gel run!**

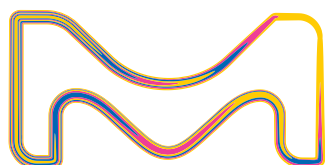


Get set to sprint through your gel electrophoresis with our full range of top-quality products. Just like a runner needs the right shoes, you need the best tools to get clear results every time.

Let us power your journey from start to finish—use promo code **IFW** to enjoy special savings and make your next gel run a winning one!

### Nucleic Acid Electrophoresis

Description	Discount	Cat. No.
<b>Agarose and Reagents</b>		
Agarose, BioReagent, for molecular biology, low EEO	57%	<b>A9539</b>
Agarose, low gelling temperature, BioReagent, for molecular biology	51%	<b>A9414</b>
1.0% Agarose in Tris-Acetate EDTA Buffer, pHast Pack™, powder	35%	<b>PPB012</b>
1.0% Agarose in Tris-Borate EDTA Buffer, pHast Pack™, powder	35%	<b>PPB013</b>
EDTA disodium salt dihydrate, suitable for electrophoresis, for molecular biology, 99.0-101.0% (titration)	22%	<b>E5134</b>
Glycerol, for molecular biology, >=99.0%	34%	<b>G5516</b>
Sodium chloride, BioXtra, >=99.5% (AT)	37%	<b>S7653</b>
<b>Ladders</b>		
DNA MW-MARKER VI_Roche	20%	<b>11062590001</b>
DNA MW-MARKER VIII_Roche	20%	<b>11336045001</b>
DNA MW-MARKER IX_Roche	20%	<b>11449460001</b>
DNA MW-MARKER XIV_Roche	20%	<b>11721933001</b>
DirectLoad™ Plus 1kb DNA Ladder	20%	<b>DPLUS-1K</b>
DirectLoad™ Plus 100bp DNA Ladder	20%	<b>DPLUS-100</b>
DirectLoad™ Plus 100bp High DNA Ladder	20%	<b>DPLUS-100H</b>
DirectLoad™ PCR 100bp Low Ladder	20%	<b>D3687-1VL</b>
DirectLoad™ 1kb DNA Ladder	20%	<b>D3937-1VL</b>
1 kb DNA Ladder, for DNA Electrophoresis	20%	<b>D0428-1VL</b>
PCR 50 - 2,000bp Marker	20%	<b>P9577-1VL</b>



The Life Science business of Merck operates as MilliporeSigma in the U.S. and Canada.

**Sigma-Aldrich®**  
Lab & Production Materials

**Millipore®**  
Preparation, Separation,  
Filtration & Monitoring Products

Description	Discount	Cat. No.
<b>Loading Buffers</b>		
Gel loading buffer	15%	G2526-5ML
RNA sample loading buffer	24%	R1386-5VL
<b>Buffers and Detergents</b>		
Tris-EDTA buffer solution, BioUltra, for molecular biology, pH 8.0	15%	93283
MOPS, >=99.5% (titration)	45%	M1254
Phosphate buffered saline, tablet	34%	P4417
Phosphate buffered saline, powder, pH 7.4, for preparing 1 L solutions	34%	P3813
Sodium dodecyl sulfate, BioReagent, suitable for electrophoresis, for molecular biology, >=98.5% (GC)	35%	L3771
Lithium dodecyl sulfate, BioReagent, for molecular biology, suitable for electrophoresis	30%	L9781
Tris-Borate-EDTA buffer, pH 8.3, pHast Pack™, powder	27%	PPB009
Tris Acetate-EDTA buffer, pH 8.3, pHast Pack™, powder	27%	PPB008



Learn more about pHast Pack™ at [SigmaAldrich.com/pHast](https://SigmaAldrich.com/pHast)

Visit [SigmaAldrich.com/gelrun](https://SigmaAldrich.com/gelrun) to buy now!

Description	Discount	Cat. No.
<b>Staining</b>		
GelRed® Nucleic Acid Stain (10,000 X Water)	15%	SCT123
GelGreen® Nucleic Acid Stain (10,000 X Water)	15%	SCT125
GelRed® Nucleic Acid Stain (10,000 X DMSO)	15%	SCT122
GelGreen® Nucleic Acid Stain (10,000 X DMSO)	15%	SCT124
SYBR GREEN I	15%	S9430
SYBR GREEN II	15%	S9305
Bromophenol Blue sodium salt	15%	B5525-10G
<b>Membranes</b>		
Blotting-Nylon 66 membranes, type B, positive	24%	15356-1EA
Nylon Membranes, positively charged_Roche	24%	NYLM-RO
Immobilon-Ny+ Membrane, charged Nylon, 0.45 µm, 30 cm x 3.3 m roll	24%	INYC00010
<b>DirectLoad™ Horizontal Electrophoresis System --**NEW**</b>		
DirectLoad™ Mini Horizontal Electrophoresis System	24%	DMINI
DirectLoad™ Midi Horizontal Electrophoresis System	24%	DMIDI
<b>Gel Purification</b>		
Agarose Gel DNA Extraction Kit _Roche	25%	11696505001
GenElute™ Gel Extraction Kit	25%	NA1111-1KT
Montage DNA gel extraction kit	25%	LSKGEL050
<b>Power Supplies</b>		
mA700 Essential Power Supply	24%	MA700
mA400 Basic Power Supply	24%	MA400



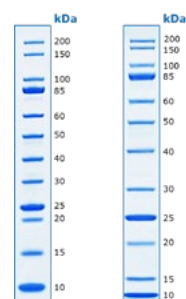
To learn more about our DirectLoad™ Mini and Midi Horizontal Electrophoresis Systems visit

[SigmaAldrich.com/NucleicAcidElectrophoresis](https://SigmaAldrich.com/NucleicAcidElectrophoresis)

Buy all products with promo code **IFW** at [SigmaAldrich.com/gelrun](https://SigmaAldrich.com/gelrun)

## Protein Electrophoresis

Global Product Text	Discount	Cat. No.
<b>Acrylamide/Bis-acrylamide and Reagents</b>		
Acrylamide/Bis-acrylamide, 30% solution, BioReagent, suitable for electrophoresis, 37.5:1	75%	A3699
Acrylamide/Bis-acrylamide, 40% solution, BioReagent, suitable for electrophoresis, 37.5:1	38%	A7168
Acrylamide/Bis-acrylamide, 30% solution, BioReagent, suitable for electrophoresis, 29:1	38%	A3574
Acrylamide/Bis-acrylamide, 40% solution, BioReagent, suitable for electrophoresis, 29:1	38%	A7802
DL-Dithiothreitol, >=98% (HPLC), >=99.0% (titration)	32%	D0632
2-Mercaptoethanol, for molecular biology, suitable for electrophoresis, suitable for cell culture, BioReagent, 99% (GC/titration)	41%	M3148
Ammonium persulfate, for molecular biology, suitable for electrophoresis, >=98%	46%	A3678
N,N,N',N'-Tetramethylethylenediamine, BioReagent, suitable for electrophoresis, ~99%	42%	T9281
<b>Molecular Weight Markers</b>		
BLUeye Prestained Protein Ladder	25%	94964-500UL
SigmaMarker™ wide range, mol wt 6,500-200,000 Da	25%	S8445-1VL
mPAGE® Color Protein Standard	25%	MPSTD4
mPAGE® Unstained Protein Standard	25%	MPSTD3
Amersham™ ECL™ Rainbow™ Marker - Full range	19%	GERPN800E
<b>Sample Buffers</b>		
Sample Buffer, Laemmli 2× Concentrate	25%	S3401-10VL
4X SDS Sample Buffer	25%	70607-3
mPAGE® 4X LDS Sample Buffer	25%	MPSB
<b>Buffers and Detergents</b>		
Trizma® base, Primary Standard and Buffer, >=99.9% (titration), crystalline	24%	T1503
Trizma® hydrochloride, reagent grade, >=99.0% (titration), crystalline	31%	T3253
Tris Buffered Saline, with 0.05% Tween® 20, pH 8.0, powder, pHast Pack™	4%	PPB002
Tris-Glycine Buffer, pH 8.3, pHast Pack™, powder	27%	PPB015
Glycine, suitable for electrophoresis, >=99%	43%	G8898
Bis-Tris Bicine EDTA buffer, pH 7.2, pHast Pack™, powder	6%	PPB019
mPAGE™ MOPS SDS Running Buffer Powder	30%	MPM0PS
mPAGE™ MES SDS Running Buffer Powder	30%	MPMES
RIPA Lysis Buffer 10 X 100 mL	25%	20-188
HEPES, >=99.5% (titration)	41%	H3375
HEPES, BioPerformance Certified, >=99.5% (titration), suitable for cell culture	28%	H4034
Phosphate buffered saline, tablet	34%	P4417
Phosphate buffered saline, powder, pH 7.4, for preparing 1 L solutions	34%	P3813
Phosphate Buffered Saline with 0.05% TWEEN® 20, pH 7.4, pHast Pack™, powder	6%	PPB005
Sodium dodecyl sulfate, BioReagent, suitable for electrophoresis, for molecular biology, >=98.5% (GC)	35%	L3771
Lithium dodecyl sulfate, BioReagent, for molecular biology, suitable for electrophoresis	30%	L9781
Sodium dodecyl sulfate, BioReagent, suitable for electrophoresis, for molecular biology, >=98.5% (GC)	35%	L3771
Triton™ X-100, laboratory grade	32%	X100
Sodium deoxycholate, >=97% (titration)	31%	D6750
CHAPS hydrate, >=98% (HPLC)	13%	C3023
TERGITOL™ solution, Type NP-40, 70% in H <sub>2</sub> O	20%	NP40S



## mPAGE® Bis-Tris Precast Gels for Protein Electrophoresis:

Description	Cat. No.	Cat. No.	Cat. No.	Discount
Acrylamide %	10-well	12-well	15-well	
4-12%	MP41G10	MP41G12	MP41G15	30%
4-20%	MP42G10	MP42G12	MP42G15	30%
8-16%	MP81G10	MP81G12	MP81G15	30%
8%	MP8W10	MP8W12	MP8W15	30%
10%	MP10W10	MP10W12	MP10W15	30%
12%	MP12W10	MP12W12	MP12W15	30%

Learn more at [SigmaAldrich.com/mpage](https://www.sigmaaldrich.com/mpage) and buy now at [SigmaAldrich.com/gelrun](https://www.sigmaaldrich.com/gelrun)

Description	Discount	Cat. No.
<b>mPAGE® Lux Casting System for ready-to-use SDS-PAGE gels in 3 minutes **NEW**</b>		
mPAGE® Lux Casting System, 0.75mm	24%	LUXCSYS-75M
mPAGE® Lux Casting System, 1mm	24%	LUXCSYS-1M
mPAGE® Lux Casting System, 1.5mm	24%	LUXCSYS-15M
mPAGE® Lux Bis-Tris Reagent Kit	20%	LUXRGTKIT
<b>mPAGE® Mini Gel Tanks</b>		
mPAGE® Mini Gel Tank, 4-gel	24%	MGT-4
mPAGE® Mini Gel Tank, 2-gel	24%	MGT-2
<b>mPAGE® Mini wet transfer system</b>		
mPAGE® Mini Wet Transfer System	24%	MWTS
<b>Staining</b>		
ReadyBlue™ Protein Gel Stain, 1L	25%	RSB-1L
SYPRO® Orange Protein Gel Stain	25%	S5692
SYPRO® Ruby Protein Gel Stain	25%	S4942
ProteoSilver™ Silver Stain Kit	25%	PROTSIL1-1KT
<b>Membranes</b>		
Immobilon®-NC Transfer Membrane 33cm X 3m	23%	HATF00010
Immobilon®-NC Transfer Membrane NOW, 10 m	23%	HATF85R
Immobilon®-E, 26.5cm x 1.875m roll (no alcohol pre-wet step required)	23%	IEVH00005
Immobilon®-E, 8.5 cm x 10 m roll (no alcohol pre-wet step required)	23%	IEVH85R
Immobilon®-FL 26.5cm x 3.75m Roll PVDF 0	23%	IPFL00010
Immobilon®-FL, 26.5cm x 1.875m roll	23%	IPFL00005
Immobilon®-FL, 8.5 cm x 10 m roll	23%	IPFL85R
Immobilon®-P 26.5 x 3.75m Roll PVDF .45um	23%	IPVH00010
Immobilon®-P SQ 26.5cm x 3.75m roll PVDF	23%	ISEQ00010
Immobilon®-P, 26.5cm x 1.875m roll	23%	IPVH00005
Immobilon®-P, 8.5 cm x 10 m roll	23%	IPVH85R
Immobilon®-PSQ, 26.5cm x 1.875m roll	23%	ISEQ00005
Immobilon®-PSQ, 8.5 cm x 10 m roll	23%	ISEQ85R
Immobilon® NOW Dispenser for 8.5 cm x 10 cm rolls	23%	IMDISP
PVDF Western Blotting Membranes _ Roche	23%	3010040001
<b>Immobilon ECL substrates</b>		
Immobilon® Classico Western HRP Substrate	24%	WBLUC
Immobilon® Forte Western HRP Substrate	24%	WBLUF
Immobilon® Crescendo Western HRP Substrate	24%	WBLUR
Immobilon® ECL HRP Substrate	24%	WBULS
Immobilon® Western Chemiluminescent HRP Substrate	24%	WBKLS



For more information on our complete solution for electrophoresis and western blotting equipment and reagents, please visit: [SigmaAldrich.com/electrophoresis](https://SigmaAldrich.com/electrophoresis)

Save now with promo code **IFW** and buy on [SigmaAldrich.com/gelrun](https://SigmaAldrich.com/gelrun)