

# Millipore®

Preparation, Separation,  
Filtration & Monitoring Products

# MERCK

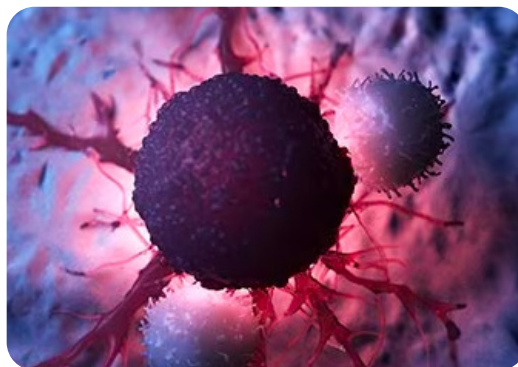
## Illuminating Research with Cancer Biomarker Detection

Our comprehensive cancer MILLIPLEX® panels are an essential toolkit for your **Cancer Research**.

They include assays for cancer biomarkers, cell signalling, checkpoint proteins, cytokines, chemokines, and growth factors. These panels guide you through intricate signalling pathways and tumour biology.

Our MILLIPLEX® assays are powered by the bead-based Luminex® xMAP® technology, offering unparalleled accuracy and lot-to-lot consistency.

You can explore our extensive cancer portfolio, which is compatible with various samples from serum, plasma, cell lysates, and other biological samples.



FOR RESEARCH USE ONLY. NOT FOR USE IN DIAGNOSTIC PROCEDURES

The Life Science business of Merck operates as MilliporeSigma in the U.S. and Canada.



Use **Promo Code IAD** on your order of the MILLIPLEX® Kits listed in the table and save **30%** off the list price!

Description	Plex	Product Code
<b>MILLIPLEX® Cell Signaling* Assays</b>		
Akt/mTOR (Phosphoprotein)	11	<b>48-611MAG</b>
Akt/mTOR (Total)	11	<b>48-612MAG</b>
Early Apoptosis	7	<b>48-669MAG</b>
Human Bcl-2 Family Apoptosis Panel 1	6	<b>48-682MAG</b>
Human Bcl-2 Family Apoptosis Panel 2	4	<b>48-683MAG</b>
Human DNA Damage/Genotoxicity	7	<b>48-621MAG</b>
MAPK/SAPK (Phosphoprotein)	10	<b>48-660MAG</b>
Human RTK (Phosphoprotein)	16	<b>HPRTKMAG-01K</b>
Multi-Pathway (Phosphoprotein)	9	<b>48-680MAG</b>
Multi-Pathway (Total)	9	<b>48-681MAG</b>
NFκB	6	<b>48-630MAG</b>
Protein Translation	6	<b>48-655MAG</b>
Human Ras-Raf Oncoprotein	6	<b>48-684MAG</b>
Src Family Kinase Active Site (Phosphoprotein)	8	<b>48-650MAG</b>
STAT(Phosphoprotein)	5	<b>48-610MAG</b>
T-Cell Receptor (Phosphoprotein)	7	<b>48-690MAG</b>
TGFβ	6	<b>48-614MAG</b>
Akt Phospho/Total	2	<b>48-618MAG</b>
Akt1 Phospho/Total	2	<b>48-631MAG</b>
Akt2 Phospho/Total	2	<b>48-632MAG</b>
CREB Phospho/Total	2	<b>48-628MAG</b>
Erk/MAPK 1/2 Phospho/Total	2	<b>48-619MAG</b>
JNK Phospho/Total	2	<b>48-622MAG</b>
mTOR Phospho/Total	2	<b>48-625MAG</b>
p38 Phospho/Total	2	<b>48-624MAG</b>
STAT3 Phospho/Total	2	<b>48-623MAG</b>
<b>MAPmate™ Control Assays</b>		
β-Tubulin (total) H, M, R (AB1 & AB2)		<b>46-713MAG</b>
GAPDH (total) H (AB2)		<b>46-667MAG</b>
MILLIPLEX® Cell Signaling Buffer and Detection Kit		<b>48-602MAG</b>

\*MILLIPLEX® Cell Signaling Assays are premixed non-configurable panels except for Human RTK (Phosphoprotein) **HPRTKMAG-01K** which is configurable.

Description	Plex	Product Code
<b>MILLIPLEX® Cancer Kits</b>		
Human Immuno-Oncology Checkpoint Protein Panel 1	17	<b>HCKP1-11K</b>
Human Immuno-Oncology Checkpoint Protein Premixed Panel 1	17	<b>HCKP1-11K-PX17</b>
Human Immuno-Oncology Checkpoint Protein Panel 2	31	<b>HCKP2-11K</b>
Human Cancer Autoantibody (QUALITATIVE KIT)	15	<b>HCABMAG-13K</b>
Human Circulating Cancer Biomarker Panel 1	25	<b>HCCBP1MAG-58K</b>
Human Circulating Cancer Biomarker Panel 3	8	<b>HCCBP3MAG-58K</b>
Human Circulating Cancer Biomarker Panel 4	10	<b>HCCB4MAG-58K</b>
Human Cancer/Metastasis Biomarker Panel 1	9	<b>HCMBMAG-22K-01</b>
Human Angiogenesis/Growth Factor Panel 1	17	<b>HAGP1MAG-12K</b>
Human Angiogenesis Panel 2	20	<b>HANG2MAG-12K</b>
Mouse Angiogenesis/Growth Factor Panel 1	27	<b>MAGPMAG-24K</b>
Mouse Immuno-Oncology Checkpoint Protein Panel 1	28	<b>MCKP1-110K</b>
Mouse Immuno-Oncology Checkpoint Protein Premixed Panel 1	28	<b>MCKP1-110K-PX28</b>
<b>MILLIPLEX® Cytokine Panels</b>		
Human Cytokine/Chemokine/Growth Factor Panel A	48	<b>HCYTA-60K</b>
Human Cytokine/Chemokine/Growth Factor Premixed Panel A	48	<b>HCYTA-60K-PX48</b>
Human Cytokine/Chemokine/Growth Factor Premixed Panel A	38	<b>HCYTA-60K-PX38</b>
Human Cytokine/Chemokine/Growth Factor Panel B	48	<b>HCYTB-60K</b>
Human Cytokine/Chemokine/Growth Factor Premixed Panel B	38	<b>HCYTB-60K-PX38</b>
Human Cytokine/Chemokine/Growth Factor Premixed Panel B	48	<b>HCYTB-60K-PX48</b>
Human Panel A and Panel B Premixed (Two 38-Plex Premixed kits)	76	<b>HCYTPAB-76SK</b>
Human Panel A and Panel B Premixed (Two 48-Plex Premixed kits)	96	<b>HCYTPAB-96SK</b>

MILLIPLEX® Cancer Kits : [SigmaAldrich.com/milliplex-cancer](https://sigmaaldrich.com/milliplex-cancer)  
MILLIPLEX® Cell Signaling Assays : [SigmaAldrich.com/milliplex-cs](https://sigmaaldrich.com/milliplex-cs)  
MILLIPLEX® Cytokine Panels : [SigmaAldrich.com/milliplex-cytokines](https://sigmaaldrich.com/milliplex-cytokines)

FOR RESEARCH USE ONLY. NOT FOR USE IN DIAGNOSTIC PROCEDURES.

## To place an order or receive technical assistance

Order/Customer Service: [SigmaAldrich.com/order](https://sigmaaldrich.com/order)  
Technical Service: [SigmaAldrich.com/techservice](https://sigmaaldrich.com/techservice)  
Safety-related Information: [SigmaAldrich.com/safetycenter](https://sigmaaldrich.com/safetycenter)

[SigmaAldrich.com](https://sigmaaldrich.com)

Merck KGaA  
Frankfurter Strasse 250  
64293 Darmstadt, Germany

